

SAGINAW RIVER

N Ln GOVT LOT 2
(E-W 1/4 LN)

NE COR
GOVT LOT 2

400-090-00

400-020-00

"MILL YARD"

400-060-00
2.90 AC

400-050-00

400-065-00
1.73 AC

400-055-00

400-075-00

BURNS ST.
400-085-00

400-080-00

400-070-00

PART OF
300-230-00

400-095-00
1.90 AC

400-100-00
1.03 AC

400-100-01

SEE MAP PAGE 10

SCHEURMAN STREET

RR R/W

SMITH STREET

STREET

BURNS STREET

STREET

DUNBAR STREET

STREET

WOODSIDE

SCHEURMAN STREET

MERCER STREET

STREET

McDONELL STREET

BURNS STREET

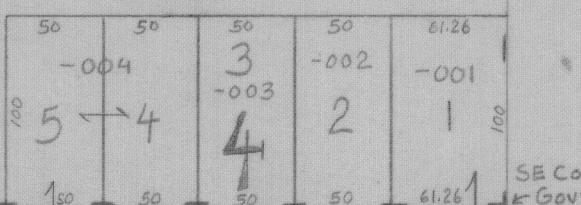
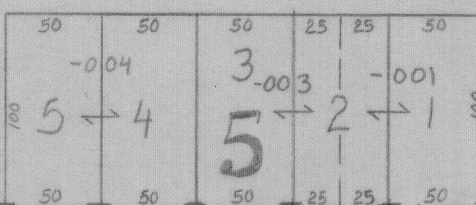
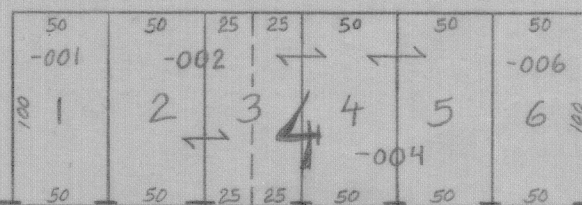
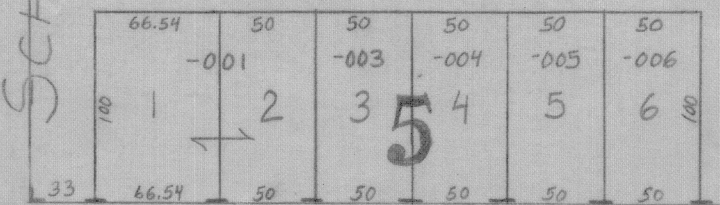
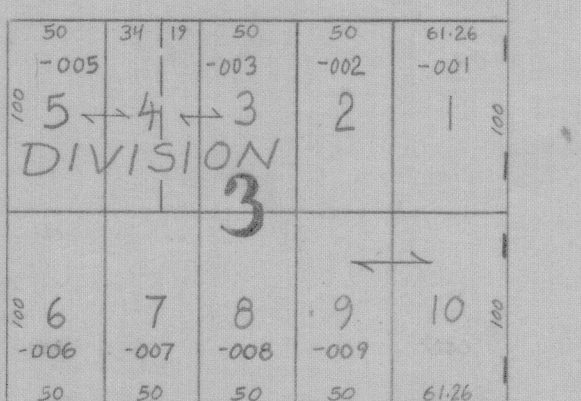
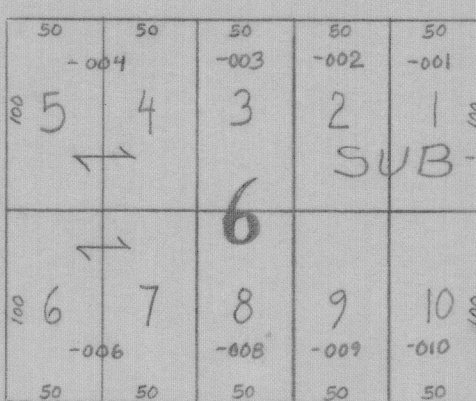
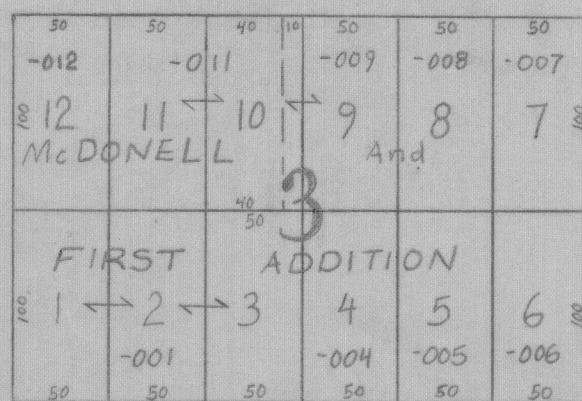
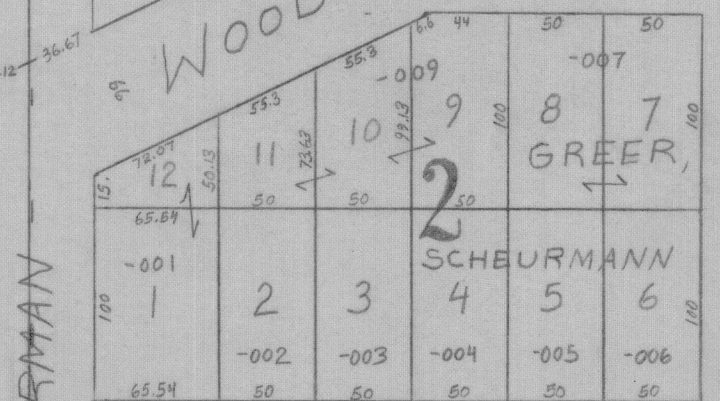
HART STREET

STREET

1"=100'



GOVT LOT 2 (NW 1/4 OF SE 1/4) SECTION 14 T14N R5E



SE COR
GOVT LOT 2

See Map of SW 1/4 of SE 1/4